

## Datasheet

Model Number	FC-785-080-SM
Serial Number	201028-R441367
Test Date	2020-10-28



[www.Civillaser.com](http://www.Civillaser.com) English

[www.CivilLasers.com](http://www.CivilLasers.com) 日本語

The laser head and power supply have the same S/N number, don't mismatch.

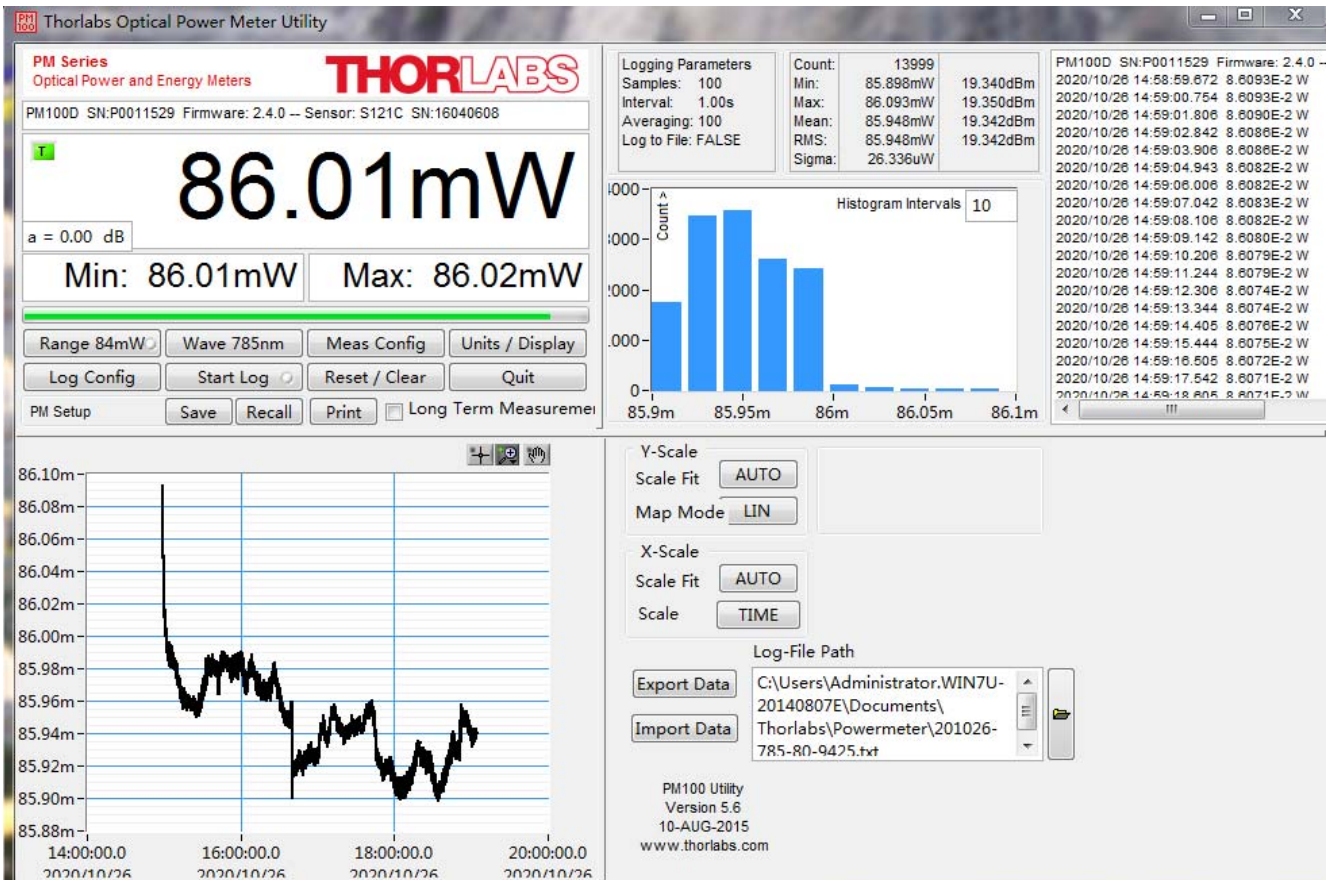
## Laser Data Report

### 1. Specifications (Test Results after 5 Min. warm-up time)

Output characteristic		
1.1	Output Power	86mW
1.2	Output Wavelength( 785+/-5nm)	785.8nm
1.3	Warm up time:	<5 minutes
1.4	Power Stability	<3% per 4 hours
Fiber characteristic		
2.1	Fiber type	single mode fiber, FC/PC
2.2	Length of Fiber	1m
Operating condition		
3.1	Operating voltage	90~240VAC
3.2	Operating Temperature:(housing temperature)	0°C~40°C
Laser Packaging		
4.1	Laser Driver	ADR-1805

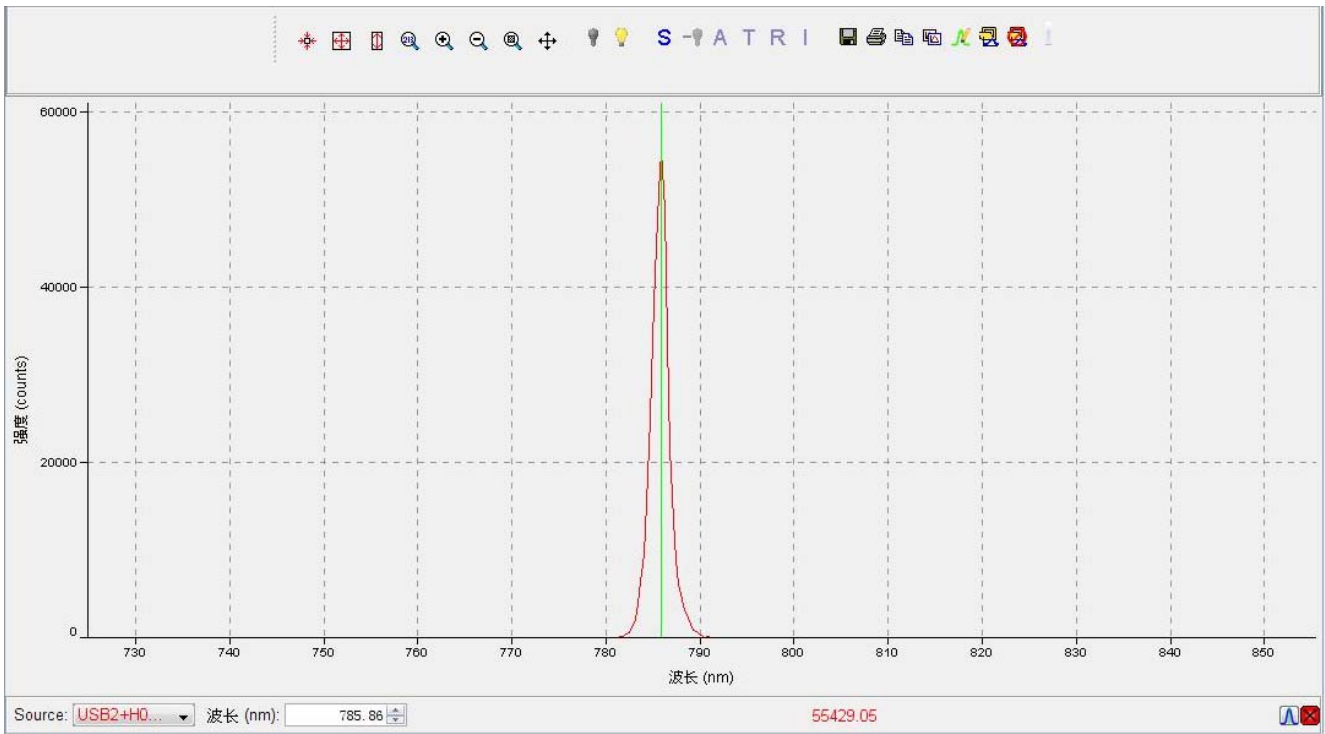
# Datasheet

## 2. Laser output power stability(4hours)



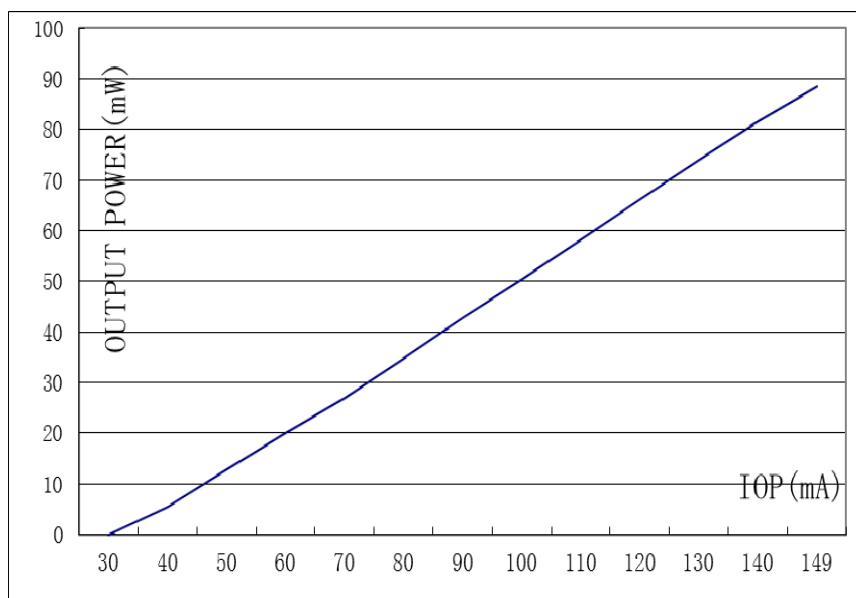
# Datasheet

## 3. Laser Spectrum



## 4. Laser power vs operating current

IOP (mA)	OUTPUT POWER (mW)
30	0
40	5.46
50	12.8
60	19.9
70	27
80	34.7
90	42.7
100	50.5
110	58.2
120	66.1
130	74
140	81.5
149	88.4



Test By: